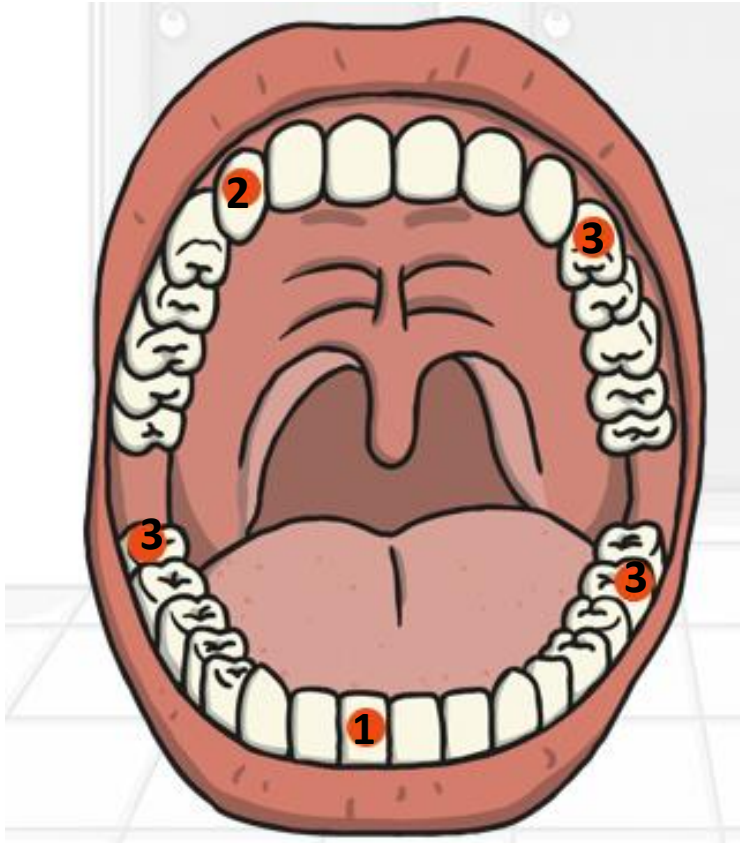


Digestion

Types of Teeth



1. **Incisors** are at the front and for biting and cutting food

2. **Canines** are sharper and for ripping and tearing food.

3. **Molars and premolars** are wider and near the back and used for holding and crushing food.

How do you look after your teeth?

Why are a carnivore's teeth different to a herbivores?

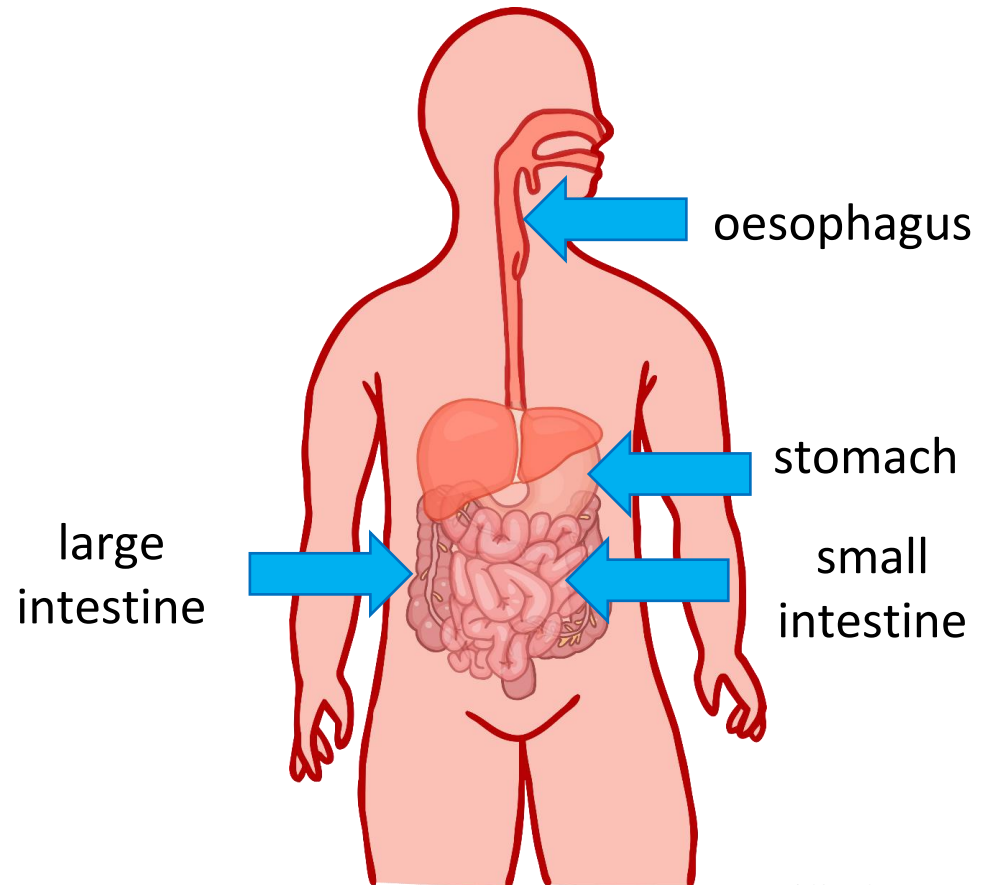
What is the tongue used for?

Key Vocabulary

Digest
Teeth
Incisor
Canine
Molar and premolar
Calcium
Tongue
Taste buds
Oesophagus
Stomach
Acid
Intestine
Carnivore
Herbivore

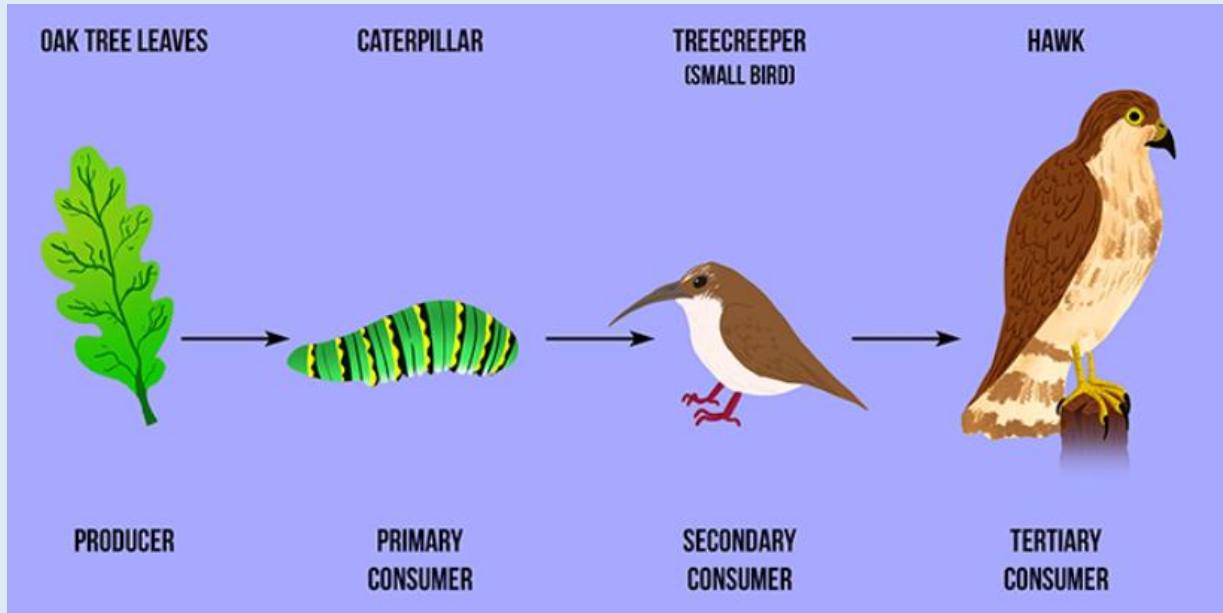
Digestion

When food is swallowed it leaves the mouth and continues through our digestive system. Lets see what you already know.



Food Chains

The arrows on a food chain show the way the food is transferred from the food to the animal that eats it.



Can you draw a different food chain?

Are you part of a food chain?